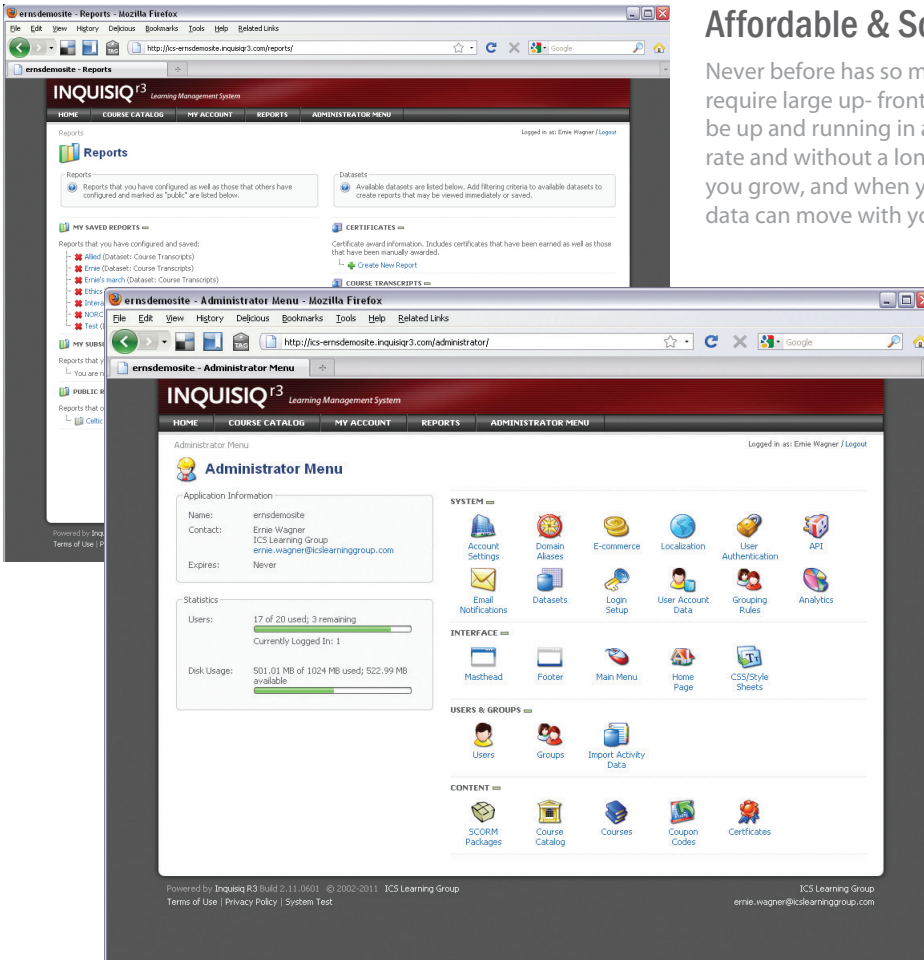


## LEARNING MANAGEMENT SYSTEM

### Feature Rich and Footprint Light

The Inquisiq R3™ Learning Management System provides all the functionality that you expect while keeping the application easy to use and affordable. With years of experience and feedback from our clients we have honed Inquisiq R3™ to a lean, well-designed application. **It has what you need to get the job done, without the bells and whistles that bloat most LMS systems making them needlessly complex and expensive.**



### Affordable & Scalable

Never before has so much been available at this price. While other LMSs require large up-front commitments, an Inquisiq R3™ hosted account can be up and running in a matter of minutes at a very affordable monthly rate and without a long-term commitment. Your hosted account grows as you grow, and when you are ready to expand to a dedicated system, your data can move with you.



### Award-Winning

Inquisiq R3™ has been awarded the coveted Brandon Hall Gold Award for Technology Excellence in the "Best Advance in Learning Management Technology for Small- and Medium-Sized Businesses" category for 2009 and 2010, and "Best Advance in Learning Management Technology for External Training" category for 2010. ICS Learning Group was also named as one of the "Top 5 Up and Coming LMS Providers" for Inquisiq R3™ by elearninginfo.com.

### SCORM Standards Compliance

Adhering to the SCORM standard and verified compatibility with numerous third party content vendors and authoring tools ensures that you and your users will experience seamless communication between Inquisiq R3™ and your content.

### Easy To Use Interface

The hallmark feature of Inquisiq R3™ is its graphic-rich, intuitive interface. The functions you need are right where you expect them. Whether you are a student or an administrator, everything you require is logically organized and can be accessed with minimum effort. The administrator control panel presents over 50 controls intuitively organized by functional group and accessed through expanding graphic menus. Each screen has context sensitive tools for consistent layout. No function is more than two clicks away.

### Lots More!

- Social Network Linking
- Flexible Reporting
- Create Course Catalogs
- Create User Groups
- Batch Upload Users
- Automate Course enrollments
- Self-registration & Enrollment
- Manage all your Classroom Based Instruction & eLearning
- eCommerce
- Assignable Due Dates & Expirations
- Active Directory Integration
- Completion Certificates
- Easily brand to your corporate ID
- powerful E-mail Notification system

(877) call toll free  
**427-4770**  
or visit  
[www.inquisiqR3.com](http://www.inquisiqR3.com)

### Features and Benefits

Inquisiq R3™ leads the way in customer-based feature enhancements. Your feedback directly affects each new version as we base our product development around the needs of our customers. Some of our core functionality is outlined below.

#### For the Learner

---

<b>NEW!</b> Social Network Linking Feature	Courses can be linked to an existing 'group' or page on any social networking site or other third party site.
Easy Course Access	Intuitive interface gives learners immediate access to their courses.
Easy Information Access	The learner's home screen allows quick access to all their account information, history, certificates, personal calendar, and courses.
Self Enrollment	Learners can browse the course catalog, and if enabled, enroll in courses with a single click.
Learner Calendar	Learners have quick access to a personalized calendar with their due dates, expiration dates, and events.
Outlook Calendar Integration	Live training events can be added to the learner's Outlook Calendar.
Email Notifications	Key events can optionally cause email reminders and notifications to be emailed to both the learner, administrator, and supervisor.
Wait List	Learners can sign-up for live training events and if full, can choose to be placed on a wait list.

#### For the Administrator

---

Course Enrollment	Enroll users to courses individually or by group. You can specify due dates, expiration dates and even re-occurring schedules.
Blended Learning Support	In addition to online courses, both live instructor lead courses and external training events can be tracked and managed.
<b>NEW!</b> Automated Group Membership	Automatically join users to groups based on information in their user profile. They will instantly inherit course enrollments from their new groups and gain access to restricted course catalogs.
Delay Group Course Enrollments	Add delays on group course enrollments. Control the delay between when someone is added to the group and when they are enrolled in the course.
Certificates	Customize certificates with your own background image and layout. Certificates are automatically awarded to learners based on one or more course completions and can be viewed and printed right from the learners "My Courses" screen.
User Management	A powerful user management system allows you to manage user accounts, assign permissions, grant access to courses and catalogs, create enrollments, and more.
Batch User Import	Create user accounts individually, or by the hundreds, by importing your HR spreadsheet. The system can also be synchronized to other HR systems.

### Features and Benefits (cont'd)

#### For the Administrator

Customize User Profiles and Registration Form	Decide what information you want to capture for your user accounts. Completely customizable registration form allows you to create your own form. All information will automatically also be available for editing by the administrator and can optionally appear in reports.
<b>NEW!</b> Import User Course Completion Records	Import historical user activity records (course and lesson completion data) from a tab delimited text file. This is a great way to import data from other systems or through your manual tracking efforts. This import can handle any number of courses or users.
Instructor/Expert Contact	Designate instructors and course experts for learners to contact should they need assistance.
Active Directory Support	Active Directory Integration is built in and can be setup and configured by the administrator. Allows you to automatically synchronize the LMS user accounts to your Active Directory. Other LDAP support is also available.
Permission Control	Control of permissions allows you to grant administrators access to only the functions they need. You can also restrict the scope of many of the permissions based on the use of groups. For example, give a supervisor the ability to run reports, but limit the ability so that only people in their assigned groups will appear in the reports.
<b>NEW!</b> Custom/External User Registration Link	Specify an external/custom URL for user registration. This is great for clients who want to create their own custom registration system and seamlessly integrate it with Inquisiq R3™.

#### Reports

Powerful Reporting Tool	Lets you access all data that is in the system (user demographics, course completion data, certificate data, purchase information, and all SCORM tracking data)
Flexibility	Choose the fields you want to appear in each report.
Control	Can easily apply filters to the reports that allow you to focus the report on what you are most interested in.
Excel Export	Any report can be exported to Excel for additional manipulation and formatting.
Save Reports	Once you have refined a report to just the way you want it, you can save it for easy access for future use. You can also specify if you want to make the report private just for you or public so that others can also run it.
Subscribe to Reports	Schedule reports to run automatically and email results.

## LEARNING MANAGEMENT SYSTEM

### Features and Benefits (cont'd)

#### Content

Course Materials	Attach spreadsheets, PDF documents or any other type of file to a course to be included in the course catalog and accessible by learners. Note that these materials can be optionally open to anyone viewing the course catalog or designated as accessible to only students enrolled in the course.
Flexible Content Organization	By organizing lessons into courses and courses into nested catalogs, virtually any content organization can be created.
SCORM Conformant	Easily upload and manage your SCORM content using our intuitive interface. Proven compatibility with many popular authoring tools such as Articulate, Captivate, Lectora, Flash, Thesis, Toolbook and Authorware as well as 3rd third party content providers such as Skillsoft & Mindleaders.
Bookmarking Support	Supports SCORM-based tracking that allows students to continue lessons right where they left off.
Restricted Access	Course catalogs can optionally be made restricted so that only those people who have been given proper access rights can view them.

**NEW!** Social Network Linking Feature      Courses can be linked to an existing 'group' or page on any social networking site or other third party site.

#### eCommerce

eCommerce	Would you like to sell access to your courses? You can optionally specify a price for each course. Doing so will post the price in your course catalog and require users that are self-enrolling to pay for them.
Shopping Cart	Let your users browse your catalog and select what courses they want to purchase by adding the courses to their shopping cart. Then, when they are finished browsing the catalog they can check out and pay for all selections at once.
Discount Codes	Specify various discount types (free, percentage, flat rate and "price off") for your courses, and provide your learners with codes to redeem them.
Gateway Support	Use your own PayPal Website Standard or Authorize.net account to accept course fees when users enroll.

#### Branding

<b>NEW!</b> Customizable Main Menu	Rename, reorder, and even create new menu items that link to pages in Inquisiq R3™ or external web pages.
Branding Capabilities	Banner, footer, and Homepage can all be easily branded to your corporate Identity.
Unique URL	Name your LMS anything you want, which will be included in your URL. You may also alias any domain(s) you own to your LMS.
Edit colors, fonts, and more	Use standard tools to modify the Custom Style Sheets (CSS) to edit colors, fonts, and more.

## Server Requirements

Developed for ease of use and administration, Inquisiq R3 server or the client. A basic understanding of IIS and MS SQL certainly helps, and if you happen to get stuck, our support staff is available and willing to lend a helping hand.

### Minimum Supported

Intel Pentium 1.0 GHz  
1 GB RAM  
Web Server OS: Microsoft Windows 2003 Web Edition / IIS 6.0  
Database: Microsoft SQL Server 2005 Work Group

### Recommended

- ♦ Dual Intel Xeon 2.0 GHz or higher
- ♦ 2 GB RAM
- ♦ Web Server OS: Microsoft Windows 2003 Standard Server / IIS 6.0
- ♦ Database: Microsoft SQL Server 2005 Standard Edition (x32)

### Required Software and Services

- ♦ IP\*Works Secure LDAP Component (for non-Active Directory LDAP connectivity)
- ♦ SMTP Service running or access to an SMTP server (for email capability)

### Important Notes

Inquisiq R3™ is NOT supported in shared server environments (such as those running Plesk, CPanel, or other control panel management software).

Due to the "virtual site" capability of Inquisiq R3 and its domain name based routing, it MUST be installed in the root folder of its own website on a dedicated IP unless otherwise recommended by technical staff.

## Client Requirements

No more security alerts, plug-in installs or help desk calls because Inquisiq R3 has been designed with compatibility in mind. The latest browsers have converged on the XHTML standard allowing Inquisiq R3 to be universally accessible by both PC and Macintosh clients. In addition, our unique approach to the server communication issue has allowed us to avoid browser plug-ins that so often cause implementation problems in highly-secured client-server environments.

- ♦ Internet Explorer 6.x - 9.x
- ♦ FireFox 2.x - 8.x
- ♦ Google Chrome
- ♦ Safari 1.x - 4.x
- ♦ Adobe Flash Player 9+ required for certificate functionality.